

PPERP PRO (one size)

**Particle Filtering Half Mask**

EN 149:2001 + A1:2009 FFP2 NR

Regulation (EU) 2016/425

PPERP PRO D (one size)

**Particle Filtering Half Mask**

EN 149:2001 + A1:2009 FFP2 NR D

Regulation (EU) 2016/425

**INSTRUCTIONS FOR USE**

PPERP PRO / PPERP PRO D (hereafter also referred to as "mask") is approved as personal protection equipment (PPE) according to European Regulation (EU) 2016/425 and meets the requirements of EN 149:2001+A:2009.

This mask should only be used to protect its wearer from solid particles and non-volatile liquid aerosols. The mask does not protect against gases and vapours.

Please make sure to observe all warnings.

**MARKING**

**D** Meets the requirements of the clogging test with dolomite

**NR** Non re-usable, for single use only, use only for one shift

End of shelf life, do not use after date format: YYYY/MM

Temperature range of storage conditions in °C

Maximum relative humidity of storage conditions in %

Follow instructions for use

Dispose in accordance with national legal regulations, recycling indication

Special warnings, always to comply with

Packaging not suitable for contact with food

Manufacturer

PPERP Produktions-GmbH  
Zweigstr. 10  
80336 Munich  
Germany

+49 89 904 221 24  
 +49 89 904 221 25  
 info@pperp.de

**▲ WARNINGS AND LIMITATIONS**

**▲ Failure to follow all instructions and warnings or inappropriate use may reduce the effect of the mask and may cause severe or life-threatening illness or permanent health damages.**

**▲ Always comply with national legal regulations.**

**▲ In order for the mask to protect its wearer from solid and non-volatile liquid particles it is necessary to ensure:**

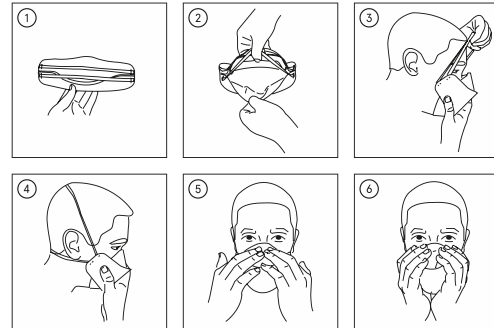
- proper storage, according to manufacturer's instructions,
  - suitable selection, i.e. the mask must be suitable for the intended use and well-fitting and
  - right usage observing manufacturer's instructions and national legal regulations, including but not being limited to training in appropriate use if necessary and compliance with regulations on how long to wear the mask at most and when to take breaks and/or replace.
  - The mask must be worn during the whole period of exposure;
  - The mask does not protect against gases/vapours;
  - Do not use the mask in an explosive atmosphere;
  - Do not use the mask in atmospheres containing less than 19% oxygen, always comply with the national legal regulations;
  - Do not use the mask for protection against unknown harmful substances or against substances in concentrations, which cause an immediate danger to life or health.
  - Facial hair in the area of the sealing line results in ill-fitting of the mask and might compromise the effective protection.
  - The mask does not contain any Latex components.
  - Discard and replace the mask if it is damaged, breathing resistance escalates and at the end of the shift.
  - Dispose in accordance with national legal regulations.
  - Do not modify, clean, repair or re-use the mask.
  - In case the mask is combined with other personal protection equipment the user is obligated to ensure that the different products are compatible. The manufacturer does not give any limit or warranty.
- Check that the mask is within the stated shelf life before you use it.

**▲ Leave contaminated/ dangerous area immediately if:**

- You have trouble inhaling or exhaling;
- dizziness, fatigue, or other distress occurs.

**FITTING INSTRUCTIONS**

Make sure your hands are clean and or wear clean gloves. Remove the mask from the packaging and check the components of the mask for damage before use.



- 1.** Hold the mask with the broad side parallel to the body, the curved nose form points away from the body, the rubber straps upwards.
- 2.** Take the rubber straps in one hand. With the thumb of the same hand, grasp the upper part of the mask with the nose clip. With the other hand, grasp the lower flap and completely unfold the mask to form a bowl.
- 3.** Place the mask body (starting with the chin) over mouth and nose. Pull the rubber straps away from the mask and upwards over the head.
- 4.** Make sure that the upper strap is placed over the upper back of the head and the lower strap under the ears over the lower back of the head and that the bands are not twisted. Align the upper and lower parts of the mask body so that the mask fits snugly, is comfortable and cannot slip during your activity. Make sure that no parts are folded inwards.
- 5.** Use both hands to gently adjust the nose clip to the bridge and shape of your nose. Make sure that there is no gap above the bridge of the nose and that the mask fits tightly.
- 6.** Inspect the correct fit of the mask before you start your activity (see FITTING INSPECTION).

**FITTING INSPECTION**

- 1.** Carefully cover the mask body with both hands without changing its position on the face.
- 2.** Exhale quickly and strongly.
- 3.** If an airstream leaks out in the area of the bridge of the nose, readjust the nose clip and repeat steps 1 and 2 mentioned above.
- 4.** If an airstream leaks out at the sealing line of the mask, check the fit of the straps on the head and adjust the position until no more air comes out at the edges. Repeat steps 1 and 2 mentioned above.

**▲ Do not enter a contaminated/dangerous area if you were not able to achieve a suitable fit.**

**STORAGE AND TRANSPORTATION**

The mask must be stored according to the manufacturer's instructions.

Please use the original packaging for storing and transporting the mask.

Do not expose the mask to direct sunlight or great heat.

Please store the mask in a dry and frost-free environment.

Temperature range of storage conditions: from +3°C to +33°C.

Maximum relative humidity of storage conditions: 70%.

End of maximum shelf life in the format YYYY/MM (see batch imprint on packaging and mask).

**QUALITY AND QUALITY MANAGEMENT**

PPERP PRO / PPERP PRO D is approved as personal protection equipment (PPE) according to European Regulation (EU) 2016/425 and meets the requirements of EN 149:2001+A:2009.

Certificates, EU-Declaration of Conformity and additional information can be downloaded using the following link: [www.pperp.de/downloads](http://www.pperp.de/downloads)

Module C2 is assessed annually by:

TÜV Rheinland LGA Products GmbH  
Tillystraße 2  
90431 Nürnberg, Deutschland  
Number of the notified body: 0197